

URBAN AGRICULTURE

in

LOS ANGELES COUNTY

WHAT IS URBAN AGRICULTURE?

"Urban Agriculture is an activity that produces, processes, distributes, or sells a diversity of food and non-food products, on land and water in urban and peri-urban areas, using or reusing natural resources and urban wastes, to yield a diversity of crops and livestock."

-Adapted from the United Nations Development Programme, 1996 by UP217A on Feb 19, 2013

1,261

VERIFIED URBAN AGRICULTURE SITES



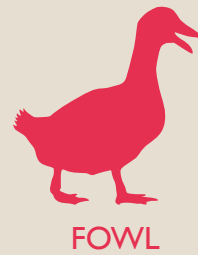
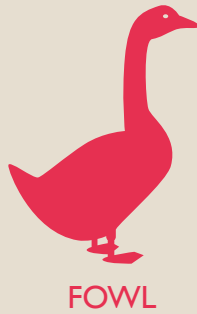
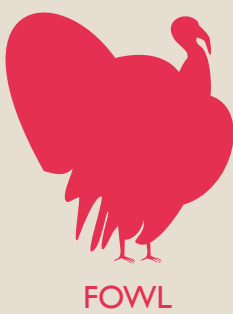
HOW IS IT REGULATED?

Los Angeles County includes 88 cities and unincorporated county land. Urban agriculture is not uniformly regulated throughout the county.

25%

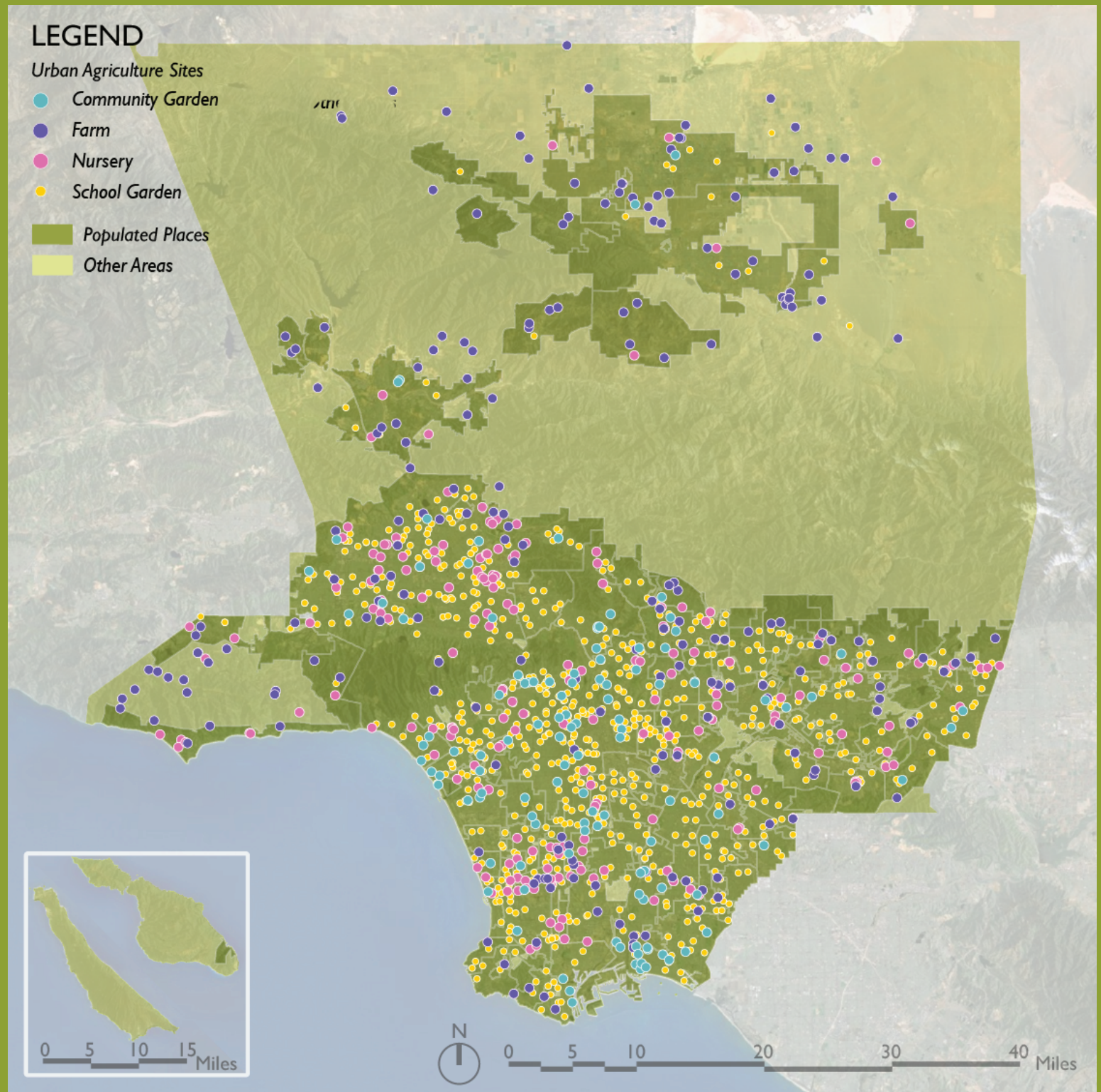
 OF MUNICIPALITIES REGULATE FLORA

87%

 OF MUNICIPALITIES REGULATE FAUNA

Defining FOWL
Definitions for agricultural activities vary throughout Los Angeles County.

WHERE IS URBAN AGRICULTURE?



Los Angeles County Population: 9,962,789 • Area: 4,752 square miles • Area of active agricultural land use: 587 square miles • Average density: 2,420 people per square mile
DENSER CITIES ARE MORE LIKELY TO HAVE A GREATER CONCENTRATION OF URBAN AGRICULTURE SITES

HOW IS IT DISTRIBUTED?



"LOCAL" FOOD = anything from the State of California



FRESH FOOD VENDORS TRAVEL **121% FURTHER THAN** ARTISANAL FOOD VENDORS*

*Based on a case study of the Altadena Farmers Market